



### Electrical Specifications

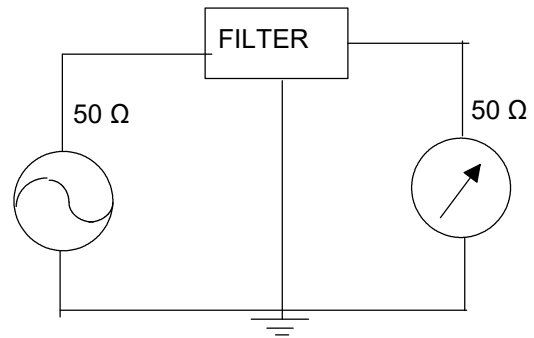
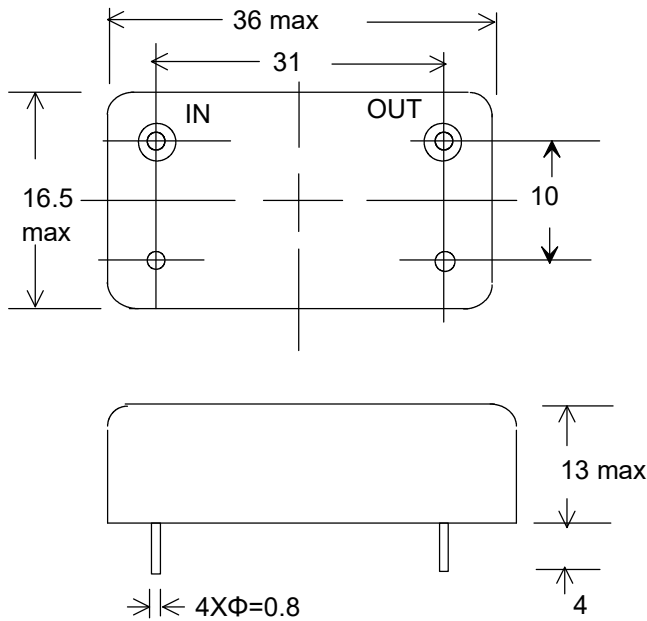
Center Frequency (Fo)	56 MHz - Fundamental
Passband Width @ -3 dB	+/- 50 KHz min
Ripple	1.5 dB max
Insertion Loss	5 dB max
Stopband Width @ - 50 dB min	Fo-200KHz to Fo+200 KHz
Spurious	40dB min
Ultimate Attenuation	-50 dB from Fo+200KHz up to 200 MHz
Impedance Zin = Zout	50 Ohms

### Operating Temperature

-40°C to +85°C

### Mechanical Drawing & Pin Connections

Drawing No: MD240078-1



Unit in mm  
1mm = 0.0394 inches  
Tolerance : +/- 0.2 mm